

GEORGE

MODERN PORT MOODY HOMES

TH5C

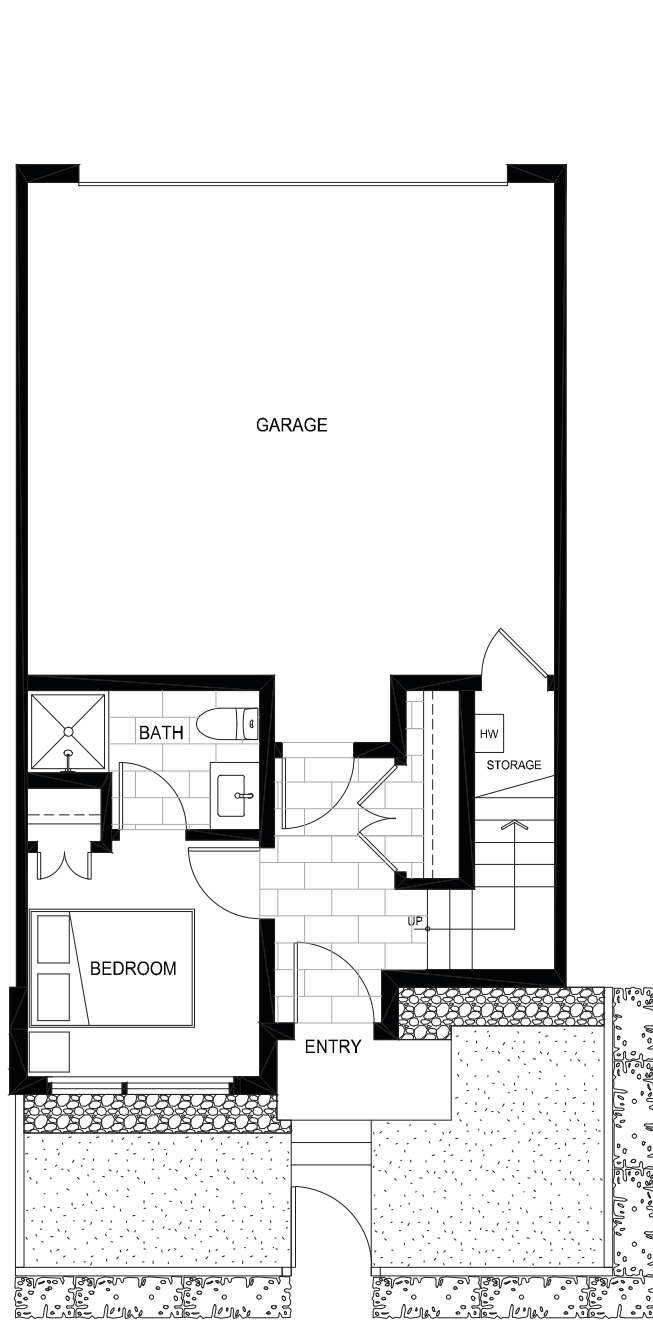
4 Bedroom

3.5 Bath

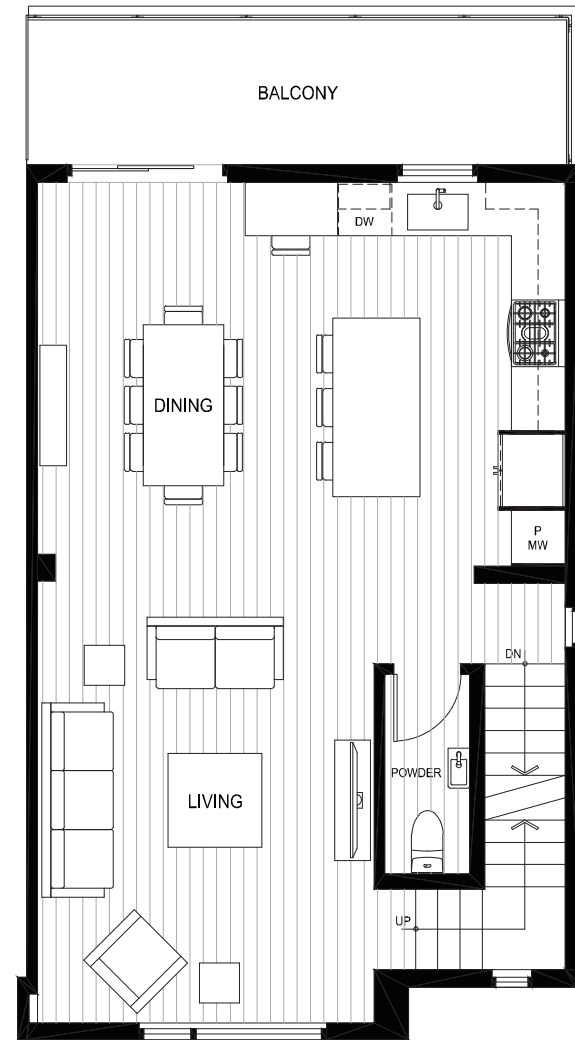
Habitable: 1582 sq. ft.

Storage: 43 sq. ft.

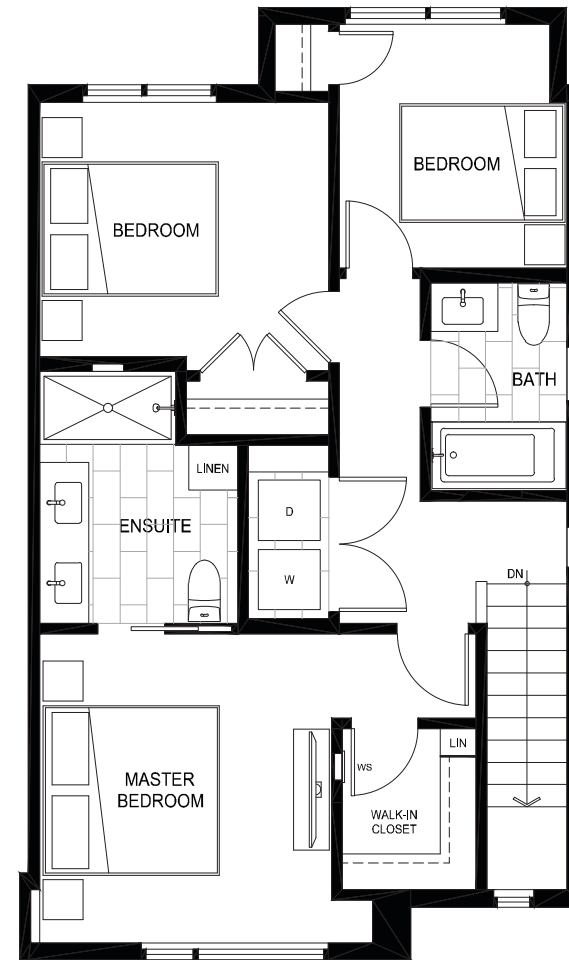
Total: 1625 sq. ft.



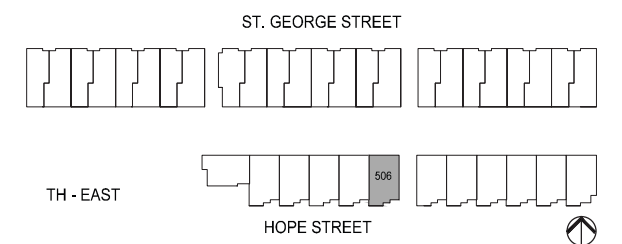
LOWER



MAIN



UPPER



The material provided herein is for general informational purposes only and is not intended to depict as-built construction designs. The Developer reserves the right in its sole discretion to make modifications or changes to the building design, floor plans, project designs, specifications, finishes, features and dimensions. Renderings are artistic concepts only. Square footages are approximate and have been calculated from preliminary strata plans. Actual final dimensions of construction may vary from those set out herein. E.&O.E. Marcon St. George (GP) Ltd.