

[GEORGE]

MODERN PORT MOODY HOMES

PH9

West Building

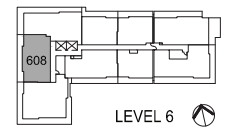
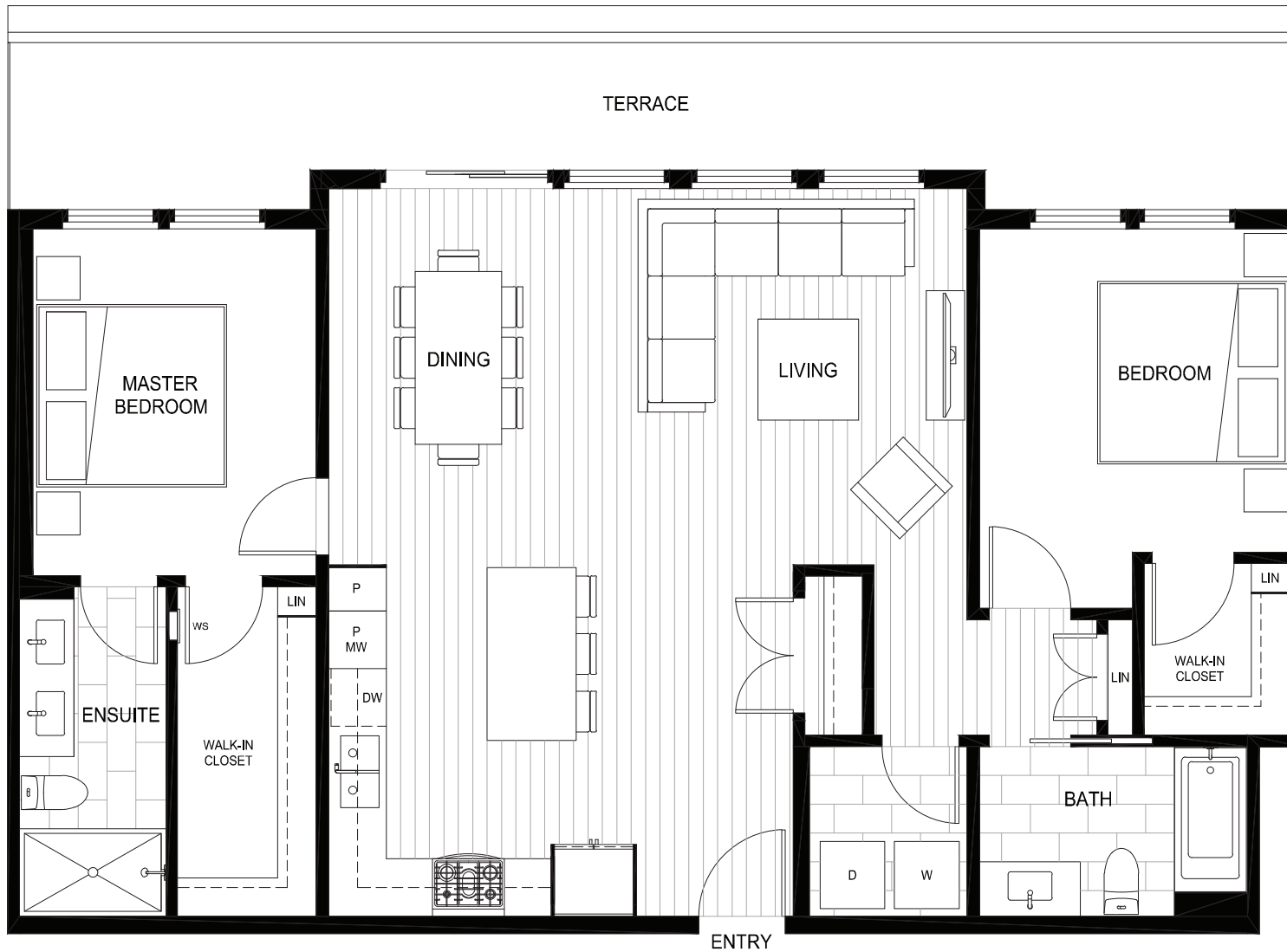
2 Bedroom

2 Bath

Interior: 1141 sq. ft.

Exterior: 253 sq. ft.

Total: 1394 sq. ft.



The material provided herein is for general informational purposes only and is not intended to depict as-built construction designs. The Developer reserves the right in its sole discretion to make modifications or changes to the building design, floor plans, project designs, specifications, finishes, features and dimensions. Renderings are artistic concepts only. Square footages are approximate and have been calculated from preliminary strata plans. Actual final dimensions of construction may vary from those set out herein. E.&O.E. Marcon St. George (GP) Ltd.